

# INCRA®/Woodpeckers®

# QUICKLIFT™ QUICKLIFT™ HDS

## ROUTER LIFT OWNER'S MANUAL

Patent No. US 8,485,766 B2

### SAFETY FIRST

Always unplug your router motor before making any adjustments to the Router Lift. Refer to your routers' owners manual for specific safe operating instructions.

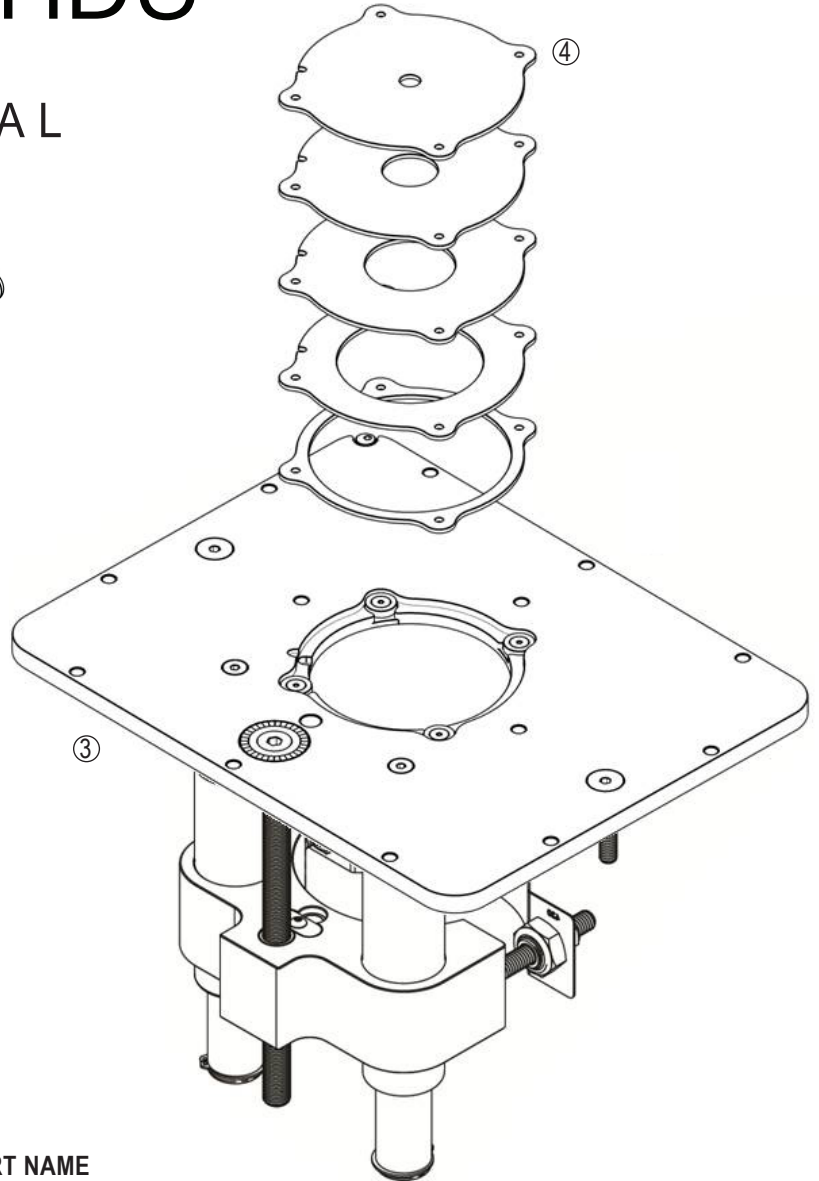
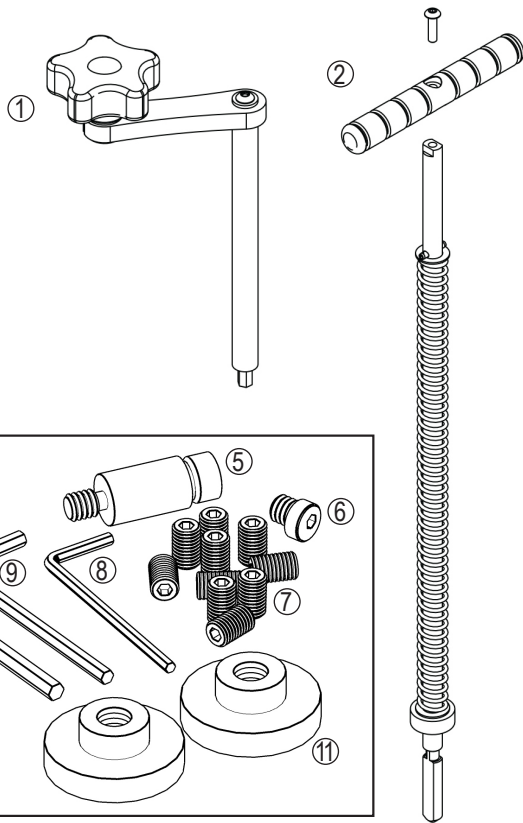


DIAGRAM  
NUMBER

QuickLift  
(QTY)

QuickLift HDS  
(QTY)

PART NAME

①	(1)	(1)	Crank Handle
②	(1)	(1)	QuickLift Wrench (Handle, Shaft, Hex Screw, #8-32 x 5/8")
③	(1)	--	QuickLift Aluminum Plate
④	--	(1)	QuickLift HDS Steel Plate
⑤	(1)	(1)	INCRA MagnaLock Rings 3/8", 1", 1-5/8", 2-5/8", 3-5/8"
⑥	(1)	(1)	Steel Starting Pin
⑦	(1)	(1)	Cam Screw
⑧	(10)	(10)	Set Screws, 1/4-28 x 3/8"
⑨	(1)	(1)	Hex Key, 3/32"
⑩	(1)	(1)	Hex Key, 1/8"
⑪	(1)	(1)	Hex Key, 5/32"
⑫	(2)	(2)	Thumbwheel Nut

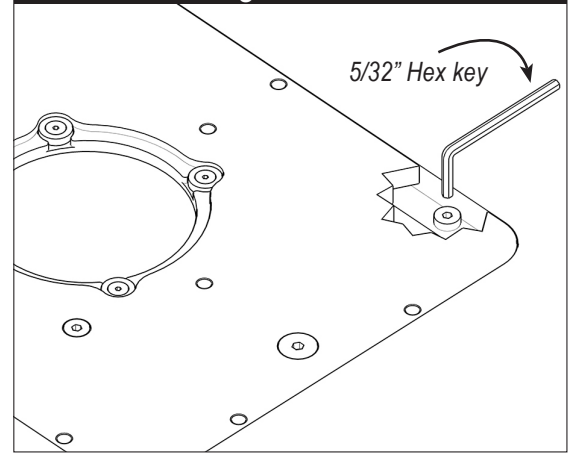
If you think you're missing anything, email us at [mailroom@woodpeck.com](mailto:mailroom@woodpeck.com).

You can also call us at 800-752-0725 from 9:00 a.m. to 4:00 p.m. EST Monday - Friday.

# INSTALLING & LEVELING THE QUICKLIFT

1. Place the QuickLift in the opening in your router table.
2. If you have an INCRA router table, Use the (10) threaded holes around the perimeter of the plate for access to the leveling screws that are already installed in the table. Insert the 5/32" hex key through these holes to adjust, Fig 1. For any other (non-Incra) router table, insert the included set screws into the threaded holes for leveling.

**FIG.1** Leveling the QuickLift



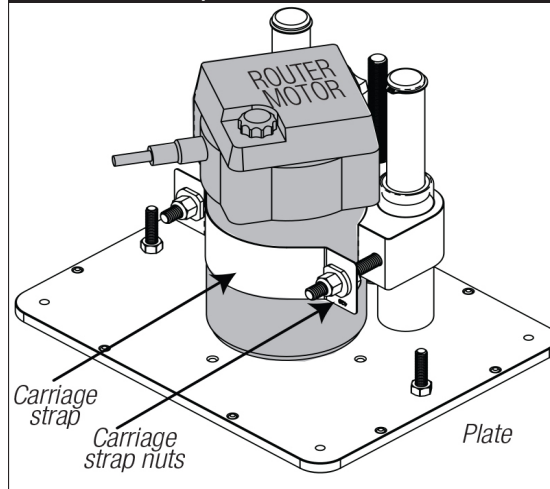
# INSTALLING THE ROUTER MOTOR

1. Use the QuickLift Wrench to raise the QuickLift Carriage so that it is nearest to the underside of the plate. (see Pg. 3 QUICKLIFT WRENCH).

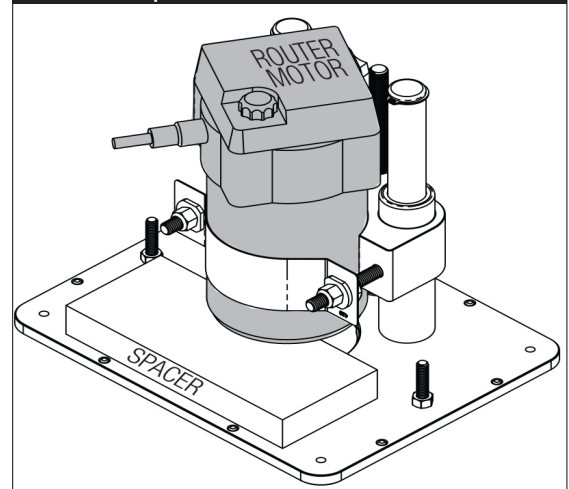
2. Mount your router motor to the QuickLift Carriage by loosening the (2) Carriage Strap Nuts, Fig. 2. Place router motor flush to the Plate. Ensure the Carriage Strap is snug to the router motor by tightening the (2) Carriage Strap Nuts.

NOTE: If your router comes with offset wrenches, use a 3/4"-1" spacer (not included) for vertical placement of router motor in the Carriage, Fig 3.

**FIG.2** No Spacer



**FIG.3** Spacer



NOTE: The motor length will determine whether above the table bit changes are possible. Shorter motor barrels like that of the PC690, Bosch 1617/1618 and a few others are too short for above the table bit changes. Offset wrenches and collet extenders can help.

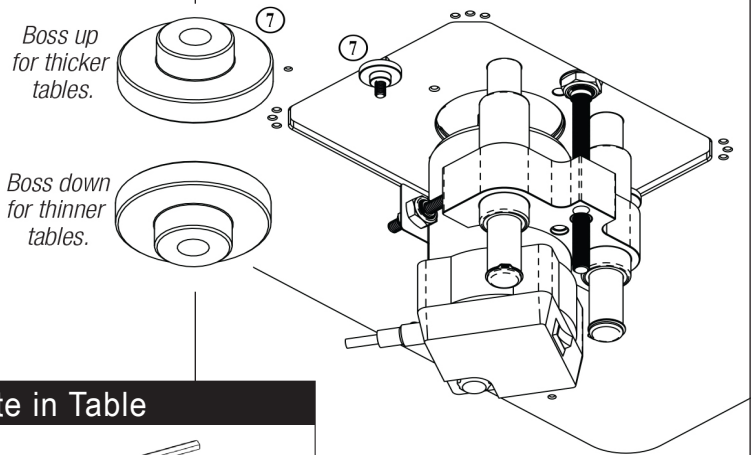
# LOCK THE QUICKLIFT TO YOUR TABLE

1. Lift the Quicklift from your router table recess and thread the included socket head Cam Screw into the hole located at the corner of the plate. Thread the fastener in until the top of the screw is just below the top of the plate. Carefully lower the Quicklift back into the router table, making sure the Cam Screw is rotated to clear the opening in your table top. Turn the fastener clockwise to lock the QuickLift in your table, Fig 4.

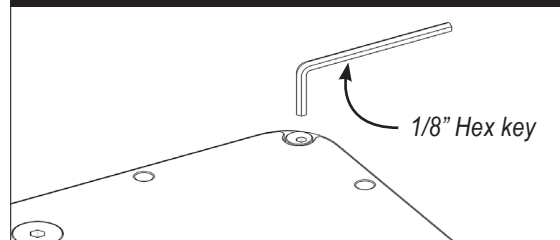
2. Thread on the (2) Thumbwheel Nuts to the fasteners on the underside of the plate as shown in Fig 5. NOTE: For thicker tables such as MDF, install the Thumbwheel Nuts with the boss up (towards the table). For thinner tables, install with the boss down (away from the table), Fig 5a.

**FIG.5** Underneath the Table

**FIG.5a**



**FIG.4** Lock Plate in Table



# QUICKLIFT WRENCH

1. Attach the Handle to the end of the QuickLift Wrench and lock in place with the included Button Head Socket screw and Hex Key, Fig 6.
2. To change the router motor height, orient the QuickLift Wrench with the handle end pointing towards the router motor and lower into the QuickLift Wrench Access, Fig 7.
3. Push down on the QuickLift Wrench until it is COMPLETELY BOTTOMED OUT. Once it is all the way in, try and rotate it. If it doesn't turn, it is not all the way in. Do not force the QuickLift Wrench. Take it out, push it back down and try again.
4. Once it turns easily, simply rotate it in either direction 1/4 turn until you feel the spring engage. Now raise or lower your router as needed, Fig 8.

FIG.6

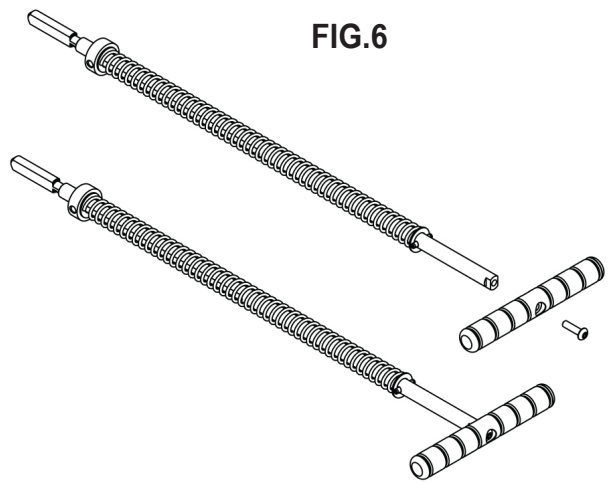


FIG.7

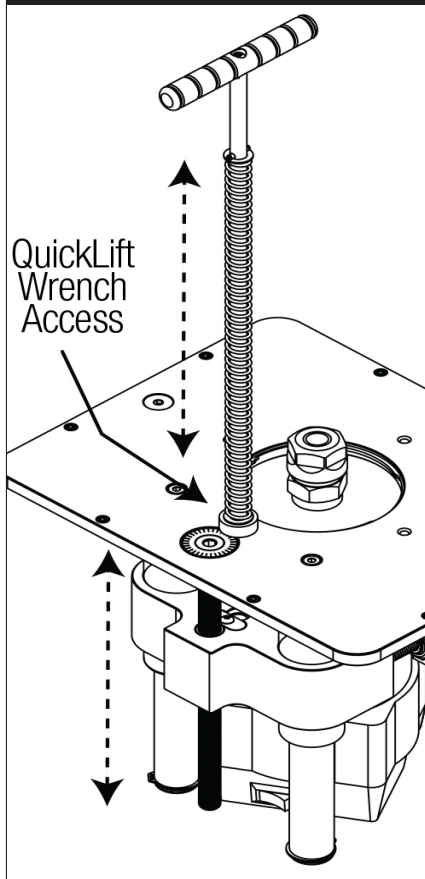
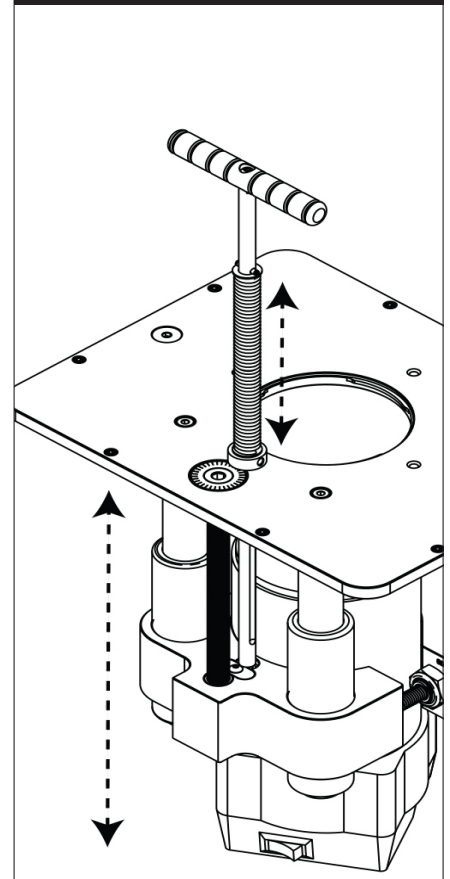


FIG.8



## HEIGHT ADJUSTMENT CRANK & DIAL SCALE

Once the router motor is roughly adjusted with the QuickLift Wrench, micro-adjust the router bit height with the Crank Handle and the Adjustment Dial. Each full revolution of the dial equals 1/32" vertical adjustment of the router bit. For future adjustments, you can zero the Adjustment Dial Scale by spinning the scale with your fingers until the zero aligns with the engraving on the plate, Figs. 9 & 9a.

FIG.9

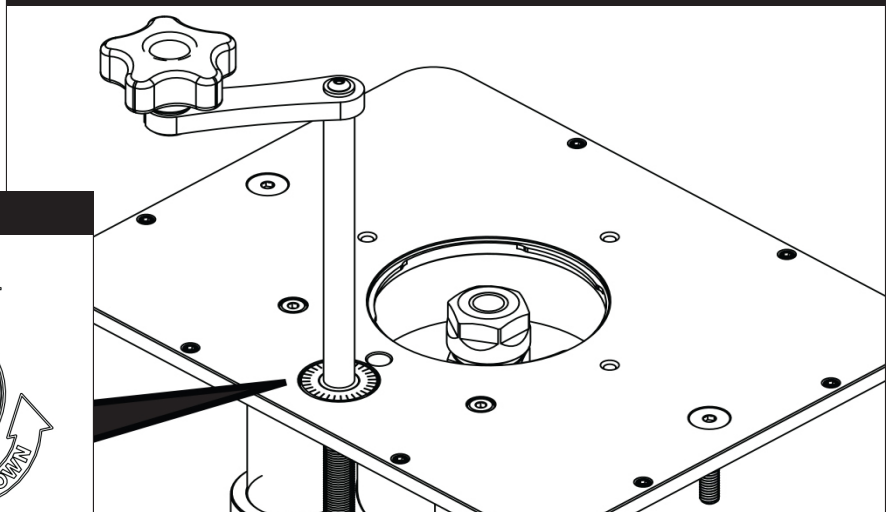
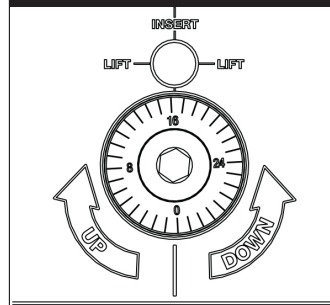


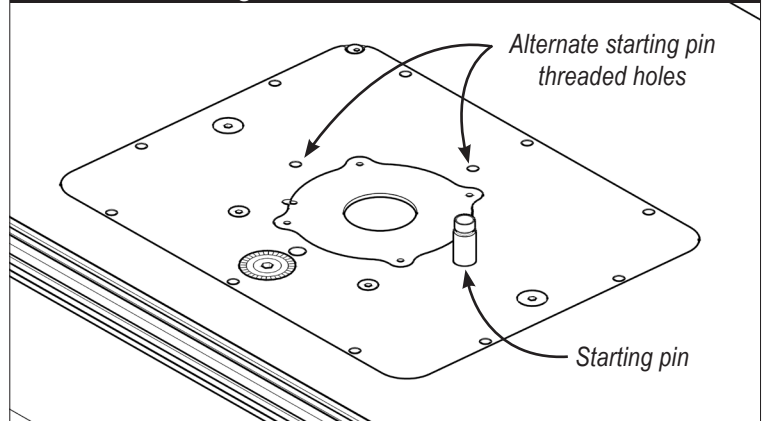
FIG.9a



## STEEL STARTING PIN

When not using the router table fence, the Steel Starting Pin may be inserted into one of the three threaded holes as an aid in guiding your workpiece into the cut, Fig 10.

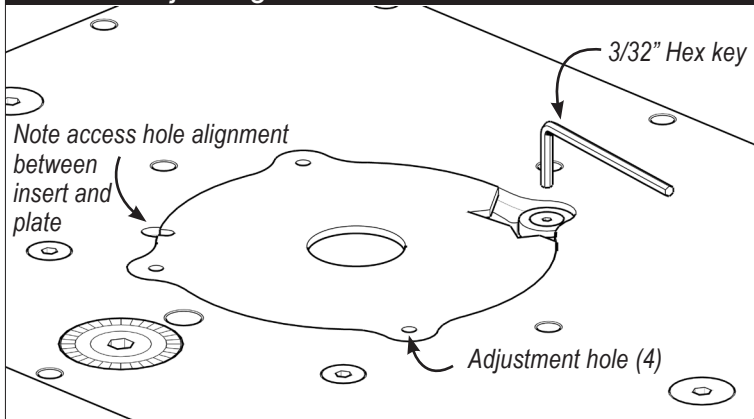
**FIG.10** Starting Pin



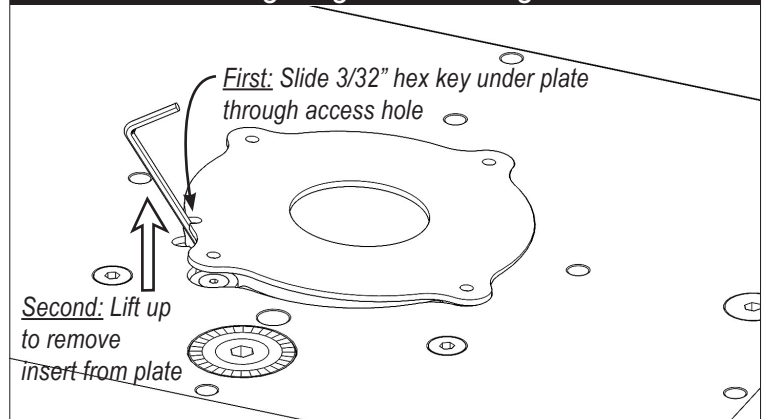
## MAGNA-LOCK RING INSERT SYSTEM

1. To install the Magna-Lock Ring insert, orient the ring so that the access hole feature on both the Magna-Lock ring and the QuickLift plate are aligned and carefully lower the ring into the recess. **TIP:** The magna-Lock ring is keyed to fit only one way. If it doesn't align on the first try, flip it over and try again. Level the Magna-Lock Ring by inserting the supplied 3/32" hex key into each of the 4 adjustment holes to turn the leveling screws, Fig 11.
2. To remove the ring insert, slide the included 3/32" hex key into the access hole and lift up, Fig 12.

**FIG.11** Adjusting Flush with Plate



**FIG.12** Removing Magna-Lock Ring



**WARNING!** To reduce the risk of injury keep hands away from moving parts. Refer to your power tool manual for proper setup and use



**WARNING!** To reduce the risk of injury, wear safety goggles or glasses with side shields, ear protection & a dust mask.



**WARNING!**

This product can expose you to chemicals, including chromium, which is known to the State of California to cause cancer and birth defects or other reproductive harm. For more information go to [www.P65Warnings.ca.gov](http://www.P65Warnings.ca.gov)

**Woodpeckers®**

Woodpeckers, LLC Strongsville, Ohio

[woodpeck.com](http://woodpeck.com)

© 2024 Woodpeckers, LLC