

INCRA® Miter V27™ Instructions

INCRA MITER V27

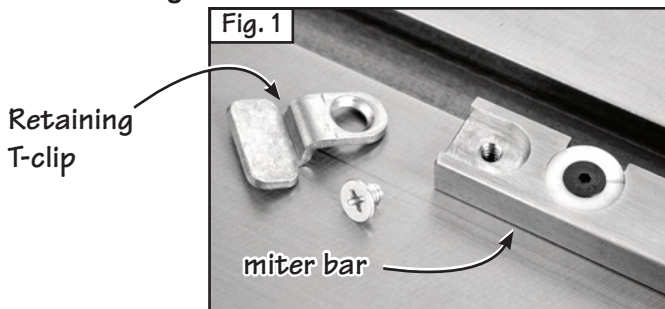
SAFETY

- ❑ Before using the INCRA Miter V27, read and follow all of the instructions and safety information in this document.
- ❑ When using the INCRA Miter V27 in conjunction with any other tool, first read and follow all instructions and safety information in that tool's owner's manual.
- ❑ When using the INCRA Miter V27, always keep your hands clear of the cutter and the line of cut.
- ❑ Always turn off the power and make sure that the cutter comes to a complete stop before changing the setting of any part of the INCRA Miter V27.
- ❑ Always securely tighten the large black clamping knob before starting any cut.
- ❑ Wear safety glasses, hearing protection, and follow all normal shop safety practices.
- ❑ After making any adjustments to the miter angle of your INCRA Miter V27, always verify safe clearance between the cutter and all parts of the INCRA Miter V27, and its attachments.

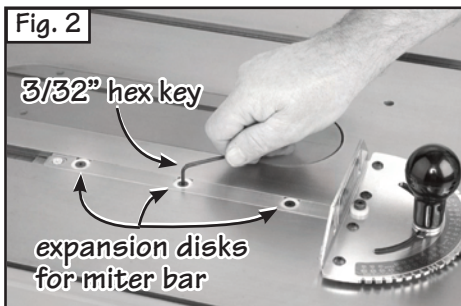
SETUP

Adjust the Miter Bar for a Perfect Fit in Your Miter Channel

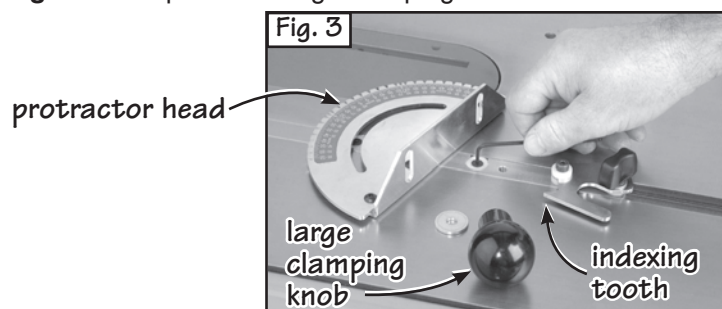
❶ Place the V27 in your tool's Miter Channel. **NOTE:** If the miter channel does not have a T-slot, remove and save the Retaining T-Clip and screw located at the end of the miter bar as shown in **Figure 1**.



❷ Using the supplied 3/32" hex key, adjust each of the (3) visible miter bar expansion disks for a zero-side play, sliding fit in your miter channel as shown in **Figure 2**. Turning the fastener clockwise EXPANDS the bar width. The disks are designed to require a fair amount of adjustment torque for proper expansion.



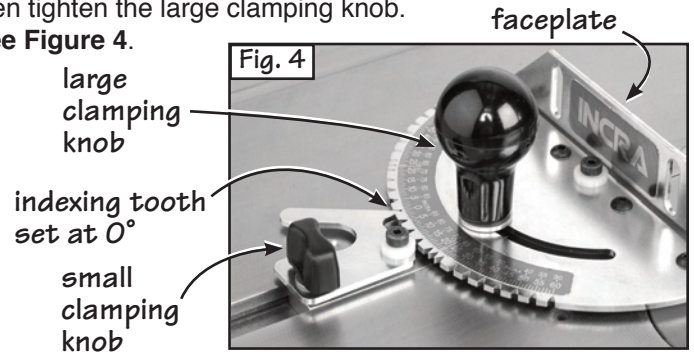
❸ Remove the large clamping knob and disengage the indexing tooth from the protractor. Pivot the protractor head to access and adjust the fourth expansion point. See **Figure 3**. Replace the large clamping knob.



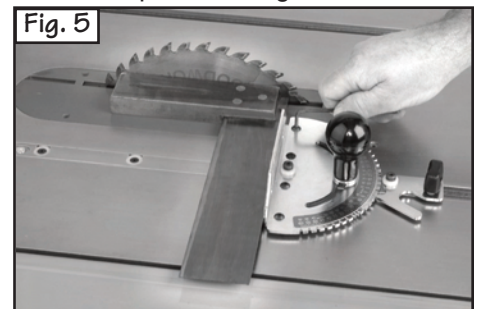
Square Miter Faceplate to your Application (table saw, router table, etc.)

❹ **Caution: Always unplug the power tool before squaring the faceplate to your application.** Loosen both the large and the small clamping knobs. Set the indexing tooth to 0 degrees, and tighten the small clamping knob, then tighten the large clamping knob.

See **Figure 4**.



❺ Using the supplied 1/8" hex key, loosen the (4) button head fasteners that secure the faceplate to the protractor, and depending on your application, square the faceplate to the blade, miter slot, sanding belt, etc. **NOTE:** When squaring to a saw blade (see **Figure 5**), use a reliable square for this important alignment. Securely retighten the (4) button head fasteners to complete the alignment.



This important one-time adjustment prepares your INCRA Miter V27 for perfect angles at all other indexing tooth positions. Verify the accuracy of your alignment with a test cut, and re-align if the cut is not exactly 90 degrees.

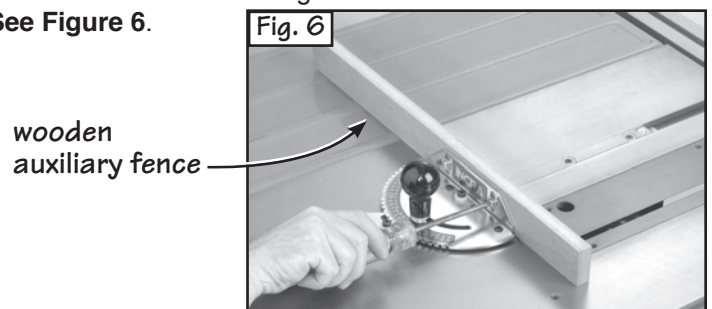
OPERATION

Your INCRA Miter V27 is now ready to easily and accurately produce perfect angles. Just loosen both clamping knobs, and engage the indexing tooth at the desired angle. Lock the indexing tooth clamping knob (the small knob), then lock the large clamping knob.

ADDING A WOODEN AUXILIARY FENCE

Your INCRA Miter V27 vertical work support surface doubles as a Universal Mounting Bracket that makes it easy to attach your own user made auxiliary fence if you ever need one. Just cut a straight piece of wood to the desired length (18" to 24" is a good size), and attach with user supplied wood screws and washers through the two slotted holes.

See **Figure 6**.



Visit our website at www.incra.com for miter accessories along with many other exciting and practical incremental woodworking tools.

INCRA - MAKING ACCURACY EASY!

INCRA products are protected by one or more of the following U.S. Patents: #4,793,604, #4,930,221, #5,195,730 #5,275,074, #5,423,360 #5,716,045, #6,237,457
Other patents granted or pending. © 2003 Taylor Design Group, Inc.

Manufactured by:
Taylor Design Group, Inc.
P.O. Box 810262
Dallas, TX 75381

WWW.INCRA.COM